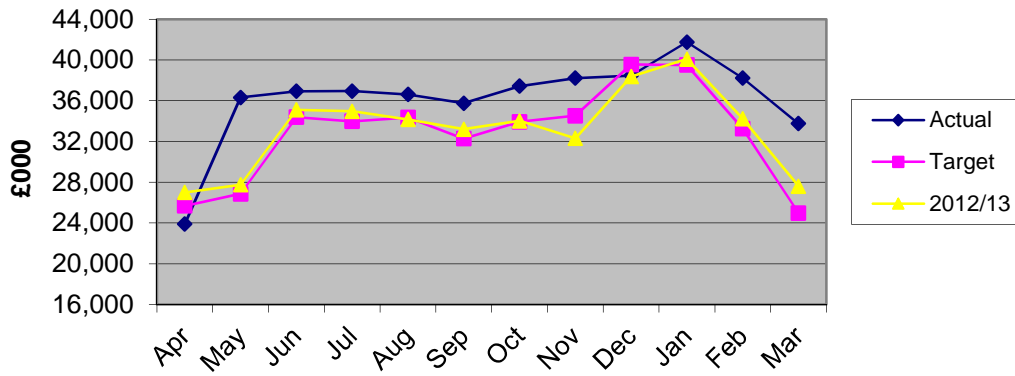


**Finance & Resources Advisory Committee Finance Indicators 2013/14  
as at end March 2014**

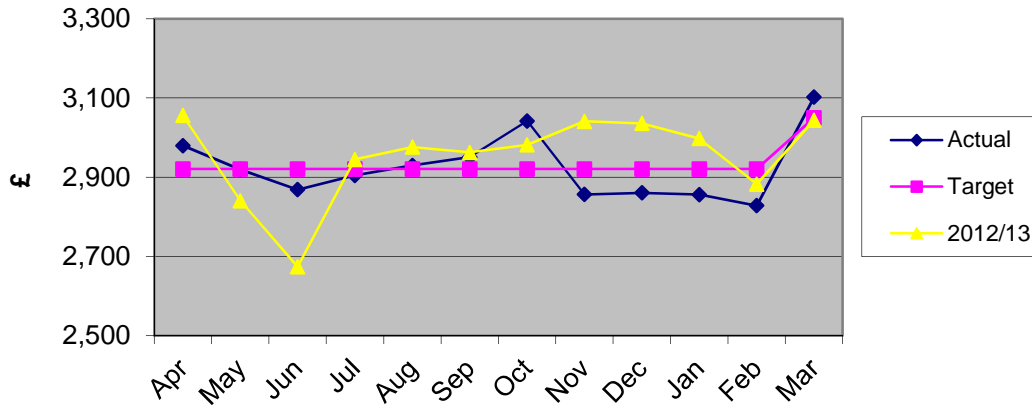
Description	target	actual	Variance		notes	graph
Monthly investment balance £000	33,253	33,752	499	1.5%	Total investments at month end. From April 2013, precepts are paid in 12 instalments of roughly £5m. (Previous years we paid in 10 instalments - not June or December). The target figures have been updated to reflect the Balance Sheet position as at 31/03/13.	1
Average monthly cost per employee (non cumulative) £	2,986	3,146	160	5.4%	Target is annual pay budget divided by budget ftes, figures include agency and casual staff. Actuals excludes costs and fte of Agency staff at Dunbrik.	2
Average monthly salary cost SDC £000	1,110	1,049	-61	-5.5%	Excludes numbers and costs of Dunbrik temps	
Number of ftes	371.8	379.6	7.8	2.1%	Target is budgeted ftes.	3
Council Tax % collected for 2013/14	98.6	98.5	-0.1	-0.1%	LPIFS 19. Monthly cumulative figures	-
NNDR % collected for 2013/14	98.5	98.5	0.0	0.0%	LPIFS 20. Monthly cumulative figures.	-
Council Tax payers % on direct debit	72.0	78.2	6.2	8.6%	LPIFS8 - % on direct debit	4
Investment return %	0.80	0.71	-0.09	-11.5%	Cumulative return on investments. Target is budget assumption	5
3 month LIBID		0.46	0.46			
7 day LIBID		0.38	0.38			
Sundry debtors: debts over 21 days £000	35	18.081	-17	-48.3%	21 days is taken as the base as the first reminder is issued after 3 wks.	6
Sundry debtors: debts over 61 days £000	20	8.285	-12	-58.6%	61 days is when the third reminder is issued (debts exclude items on 'indefinite hold', e.g. debtors in administration)	7

**Finance & Resources Advisory Committee Finance Indicators 2013/14  
as at end March 2014**

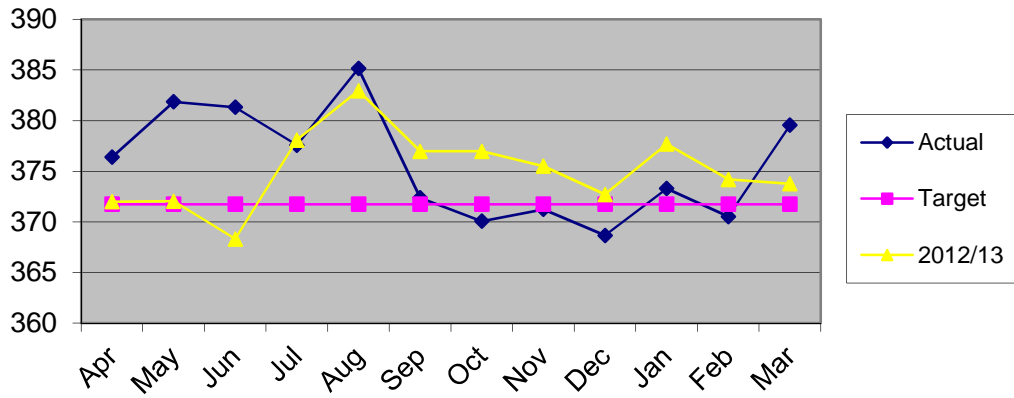
**Graph 1 - Monthly Investment Balance**



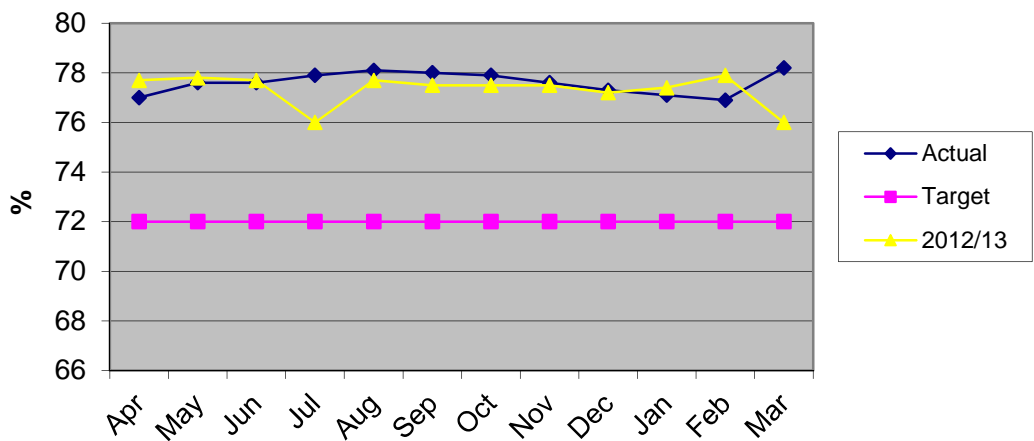
**Graph 2 - Av. monthly cost per employee (excludes agency staff at Dunbrik )**



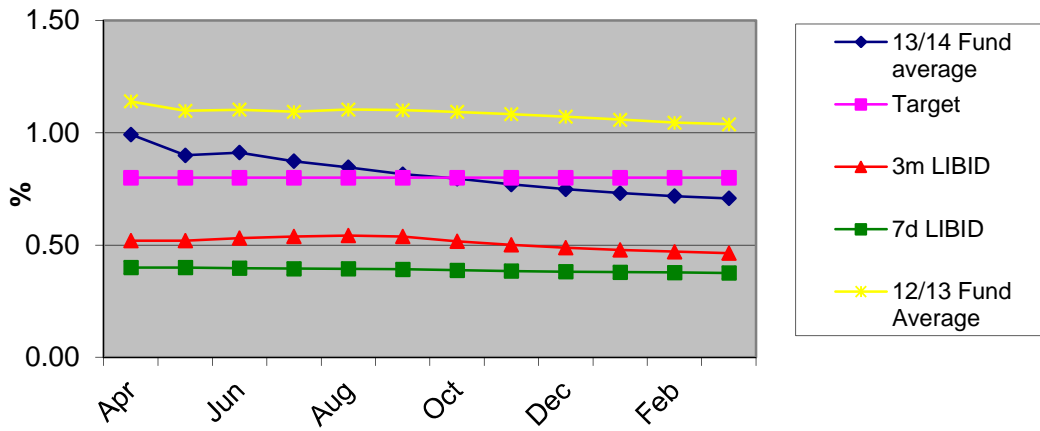
**Graph 3 - Number of ftes  
(includes agency staff used on Trading account)**



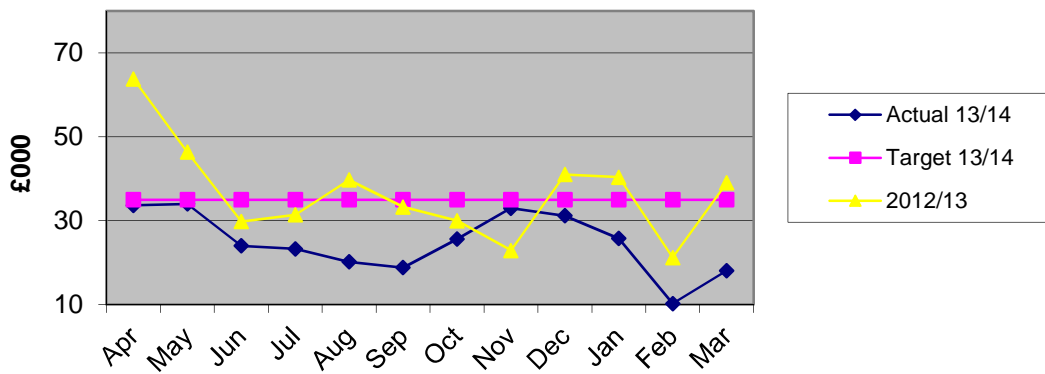
**Graph 4 - Council Tax % on direct debit**



**Graph 5 - Investment Return %**



**Graph 6 - Sundry debts over 21 days**



**Graph 7 - Sundry debts over 61 days**

